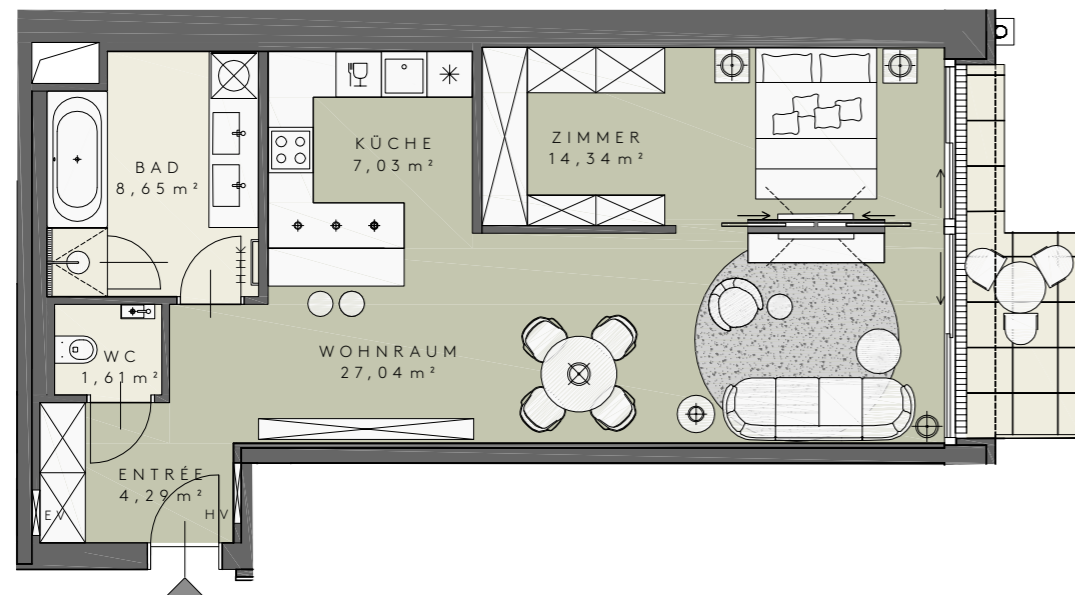


**TOP 41**  
**7. OBERGESCHOSS**

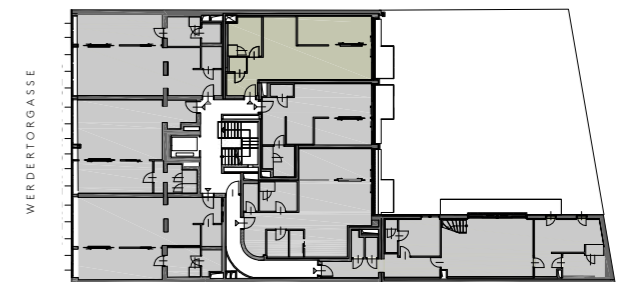
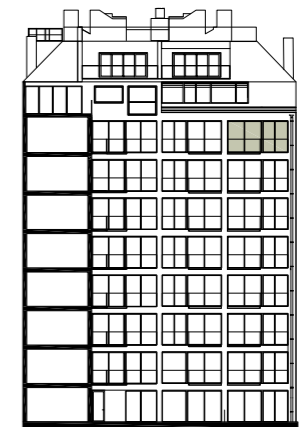
WERDERTORGASSE 6 - 1010 WIEN

ENTRÉE	4,29 m <sup>2</sup>
WC	1,61 m <sup>2</sup>
BAD	8,65 m <sup>2</sup>
KÜCHE	7,03 m <sup>2</sup>
WOHNRAUM	27,04 m <sup>2</sup>
ZIMMER	14,34 m <sup>2</sup>
<b>GESAMT</b>	<b>62,96 m<sup>2</sup></b>
LOGGIA	2,95 m <sup>2</sup>
BALKON	2,69 m <sup>2</sup>
KELLER	2,21 m <sup>2</sup>
RAUMHÖHE	2,65 m



LOGGIA  
2,95 m<sup>2</sup>

BALKON  
2,69 m<sup>2</sup>



EV ELEKTROVERTEILER  
 HHK HANDTUCHHEIZKÖRPER  
 HV HEIZUNGSVERTEILER

0 3 6 M

